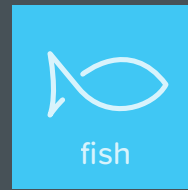




POLnet



FEED STORAGE FOR FISH FARMING

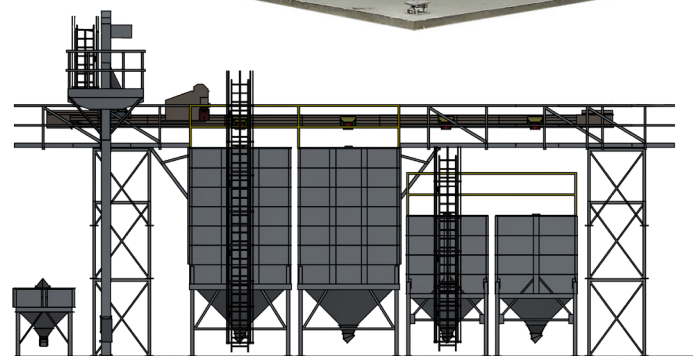
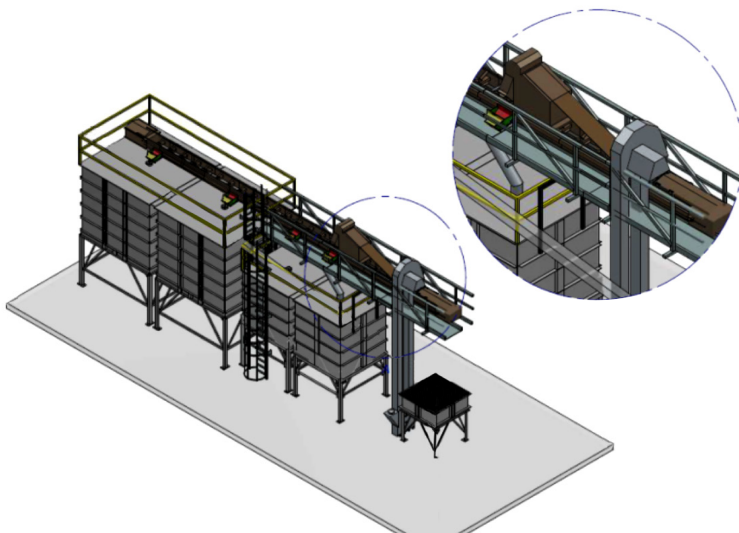
The POLnet square silo is the **BEST SOLUTION FOR STORAGE OF FISH FEED.**

Modular construction allows the use of DIFFICULT BUILDING SURFACE – height and space restrictions.



We offer complex design of your fish feed installation including:

- | Square silos (round also available in POLNET offer)
- | Grain, feed and pellets transporting system:
 - Intake pits
 - Bucket elevators
 - Chain conveyors
 - Belt conveyors
 - Spiral augers
- | Cleaners
- | Weighing system
- | Big-bag buffer silos (including grating or knife)
- | Ladders, platforms, catwalk, handrails (silo walkable roof on request)
- | Control and management system to run the whole installation

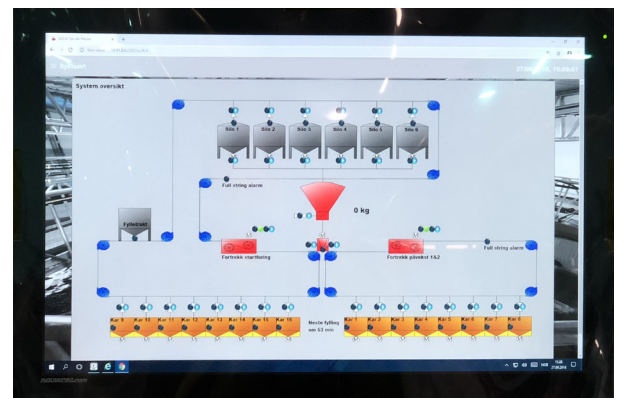


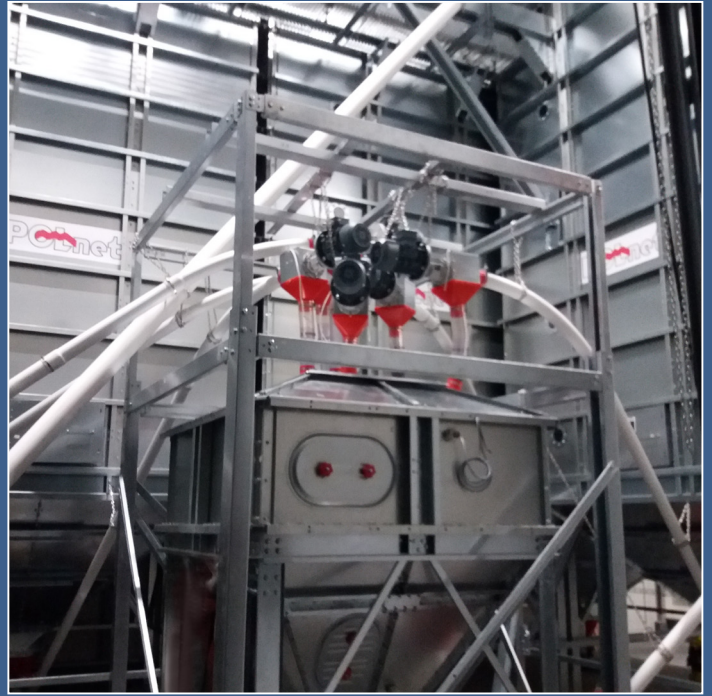
CHARACTERISTIC OF OUR SQUARE SILOS:

- | Manufactured from structural steel S350, zinc coating 350 g/m²
- | Silo legs made of heavy, galvanized metallurgical profiles
- | Internal smooth walls that guarantee:
 - Perfect internal hygiene
 - Most efficient unloading
 - No sharp edges or inside shelves blocking the feed from falling out
- | Perfect silo tightness
- | Flat head screws inside the silos
- | Equipped with inspection windows and inspection hatch
- | Easy to assemble
- | Modular construction, with possibility to expand in future

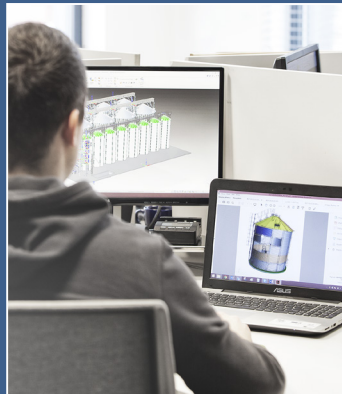
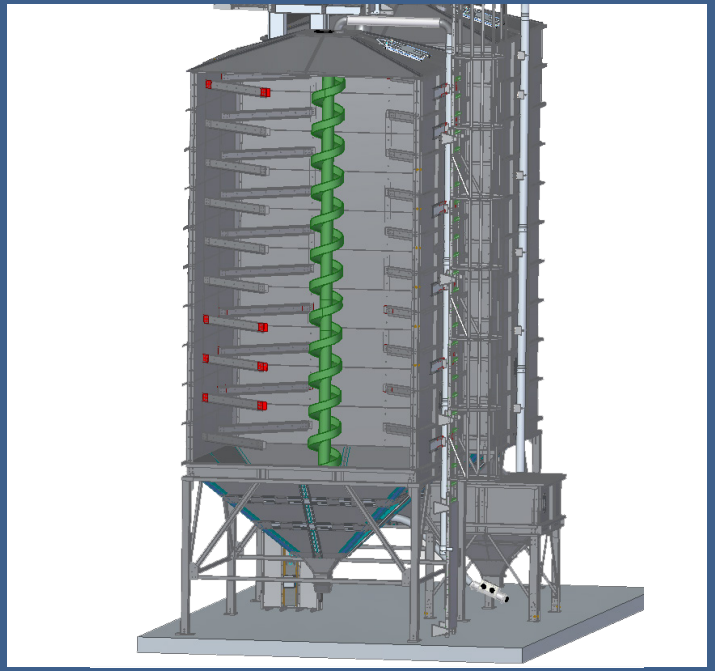
OPTIONAL EQUIPMENT TO SQUARE SILOS:

- Loading pipe
- Venting pipe
- Dust filters
- Ladder with protection cage
- Platforms, handrails, walkable roof
- Funnel aeration system
- Temperature sensors
- Level sensors
- Weighing system
- Slopped roof for outside silos
- Electric or manual shut off valves
- Roof hatch
- Spiral inside cascade for gentle feed treatment





FOR GENTLE FEED AND PELLETS TREATMENT



PROJECT | PRODUCTION | WORLDWIDE DELIVERY



POLNET Sp. z o.o.
i Wspólnicy
Spółka Komandytowa

ul. Sowia 13 B
62-080 Tarnowo Podgórne, Polska
tel.: + 48 61 657 67 00, fax: + 48 61 657 67 67
office@polnet.pl
export@polnet.pl

| **Export Head Office:**
+ 48 600 461 134

| **Belgium Department:**
+ 32 485 51 84 97

| **Austrian Department:**
+ 43 676 56 11 288
+ 43 664 88 65 4629

www.polnet.pl

